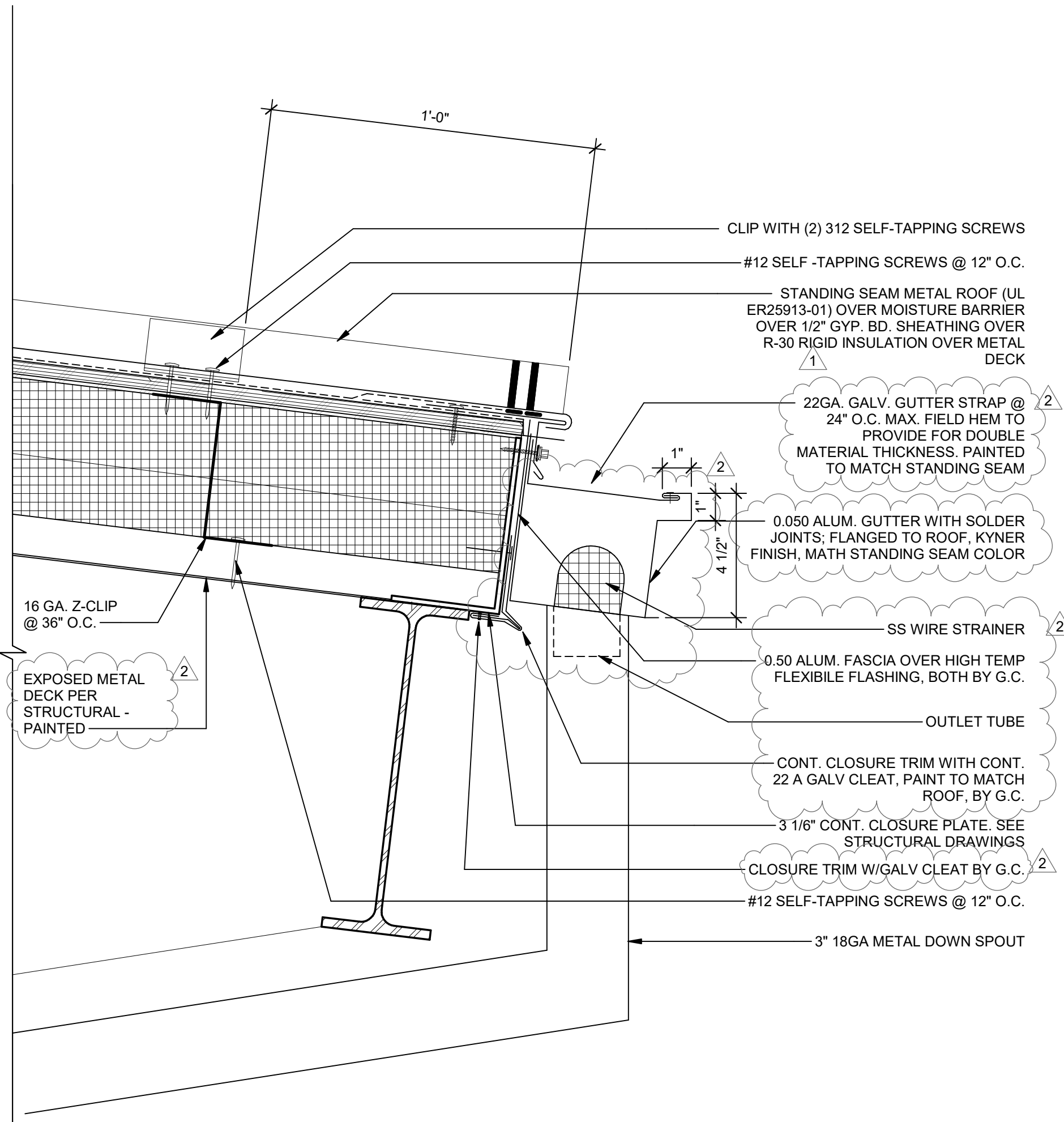
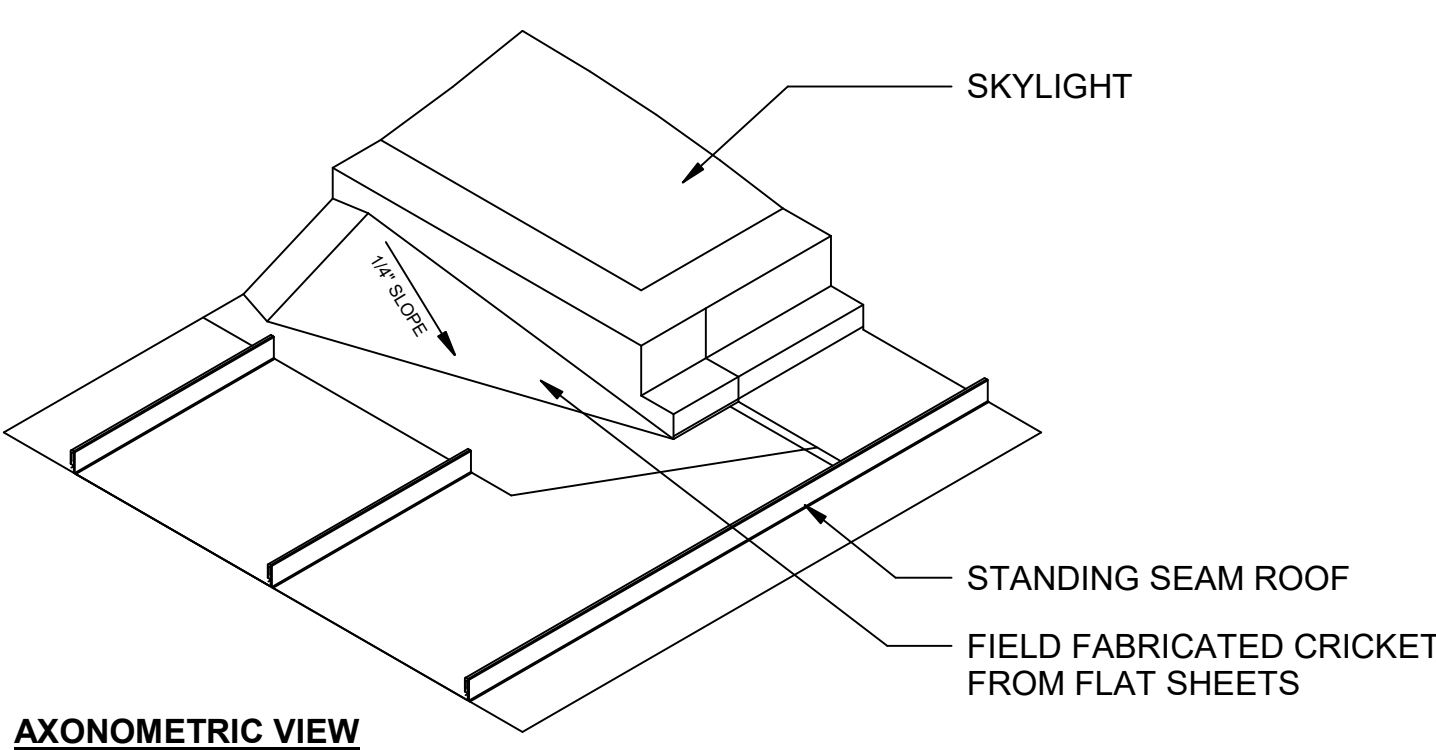


9 TYPICAL ROOF EAVE DETAIL W/ GUTTER
Scale: 3" = 1'-0"



GENERAL ROOF NOTES

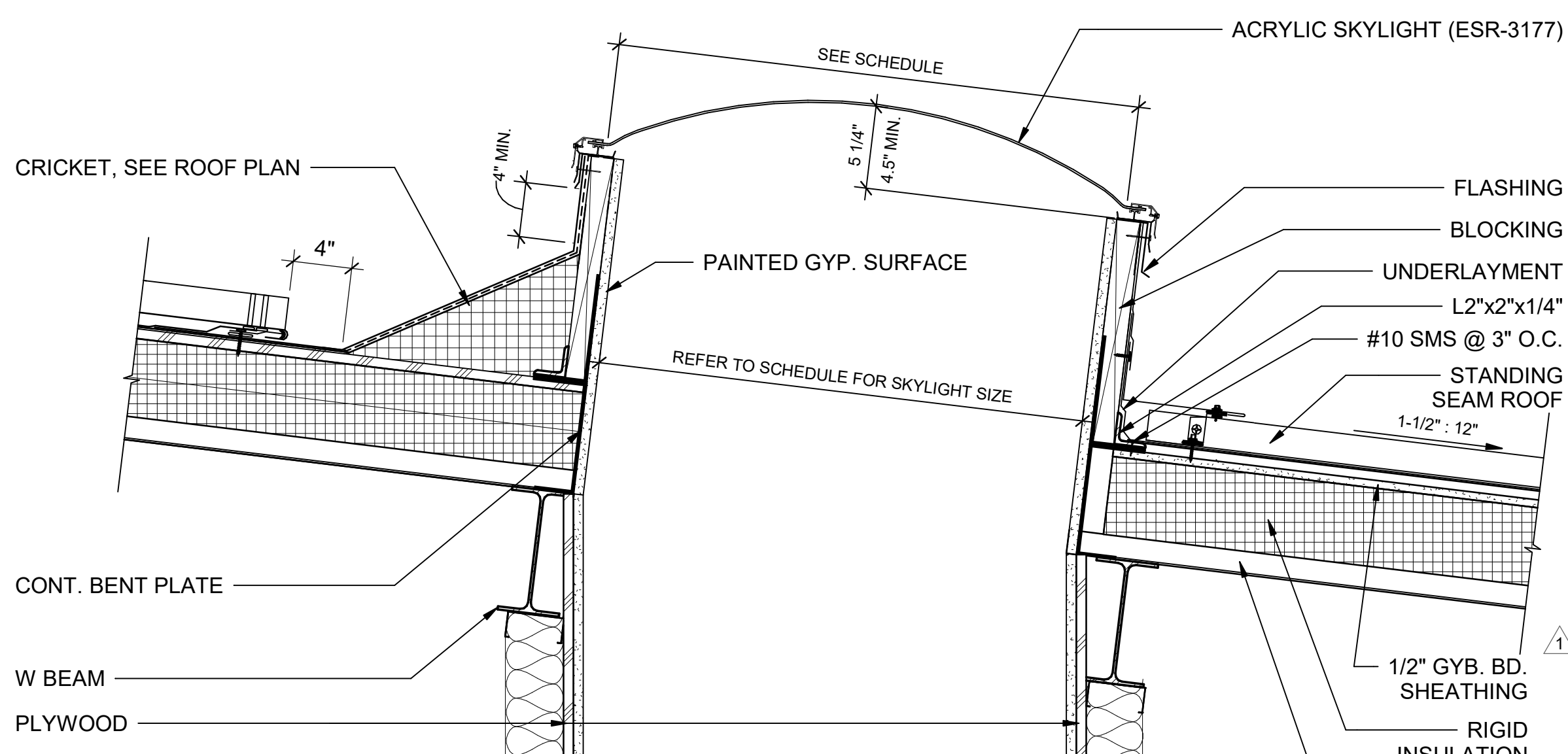
- ITEMS NOT PROVIDED BY THE METAL ROOF MANUF. TO BE PROVIDED AND INSTALLED BY THE G.C. AS REQUIRED FOR A COMPLETE INSTALLATION INCLUDING AND NOT LIMITED TO THE FOLLOWING: UNDERLAYMENT, VAPOR BARRIER, PANEL ACCESSORIES, CLOSURE PLATES, BACKING PLATES, CLOSURE STRIPS, FLASHING, TRIM, FASTENERS, BLOCKING NECESSARY FOR ATTACHMENTS AND SEALANTS.
- ALL 1/2" GYPSUM BOARD NOTED AT METAL ROOF TO BE MOISTURE RESISTANT GYPSUM BOARD.



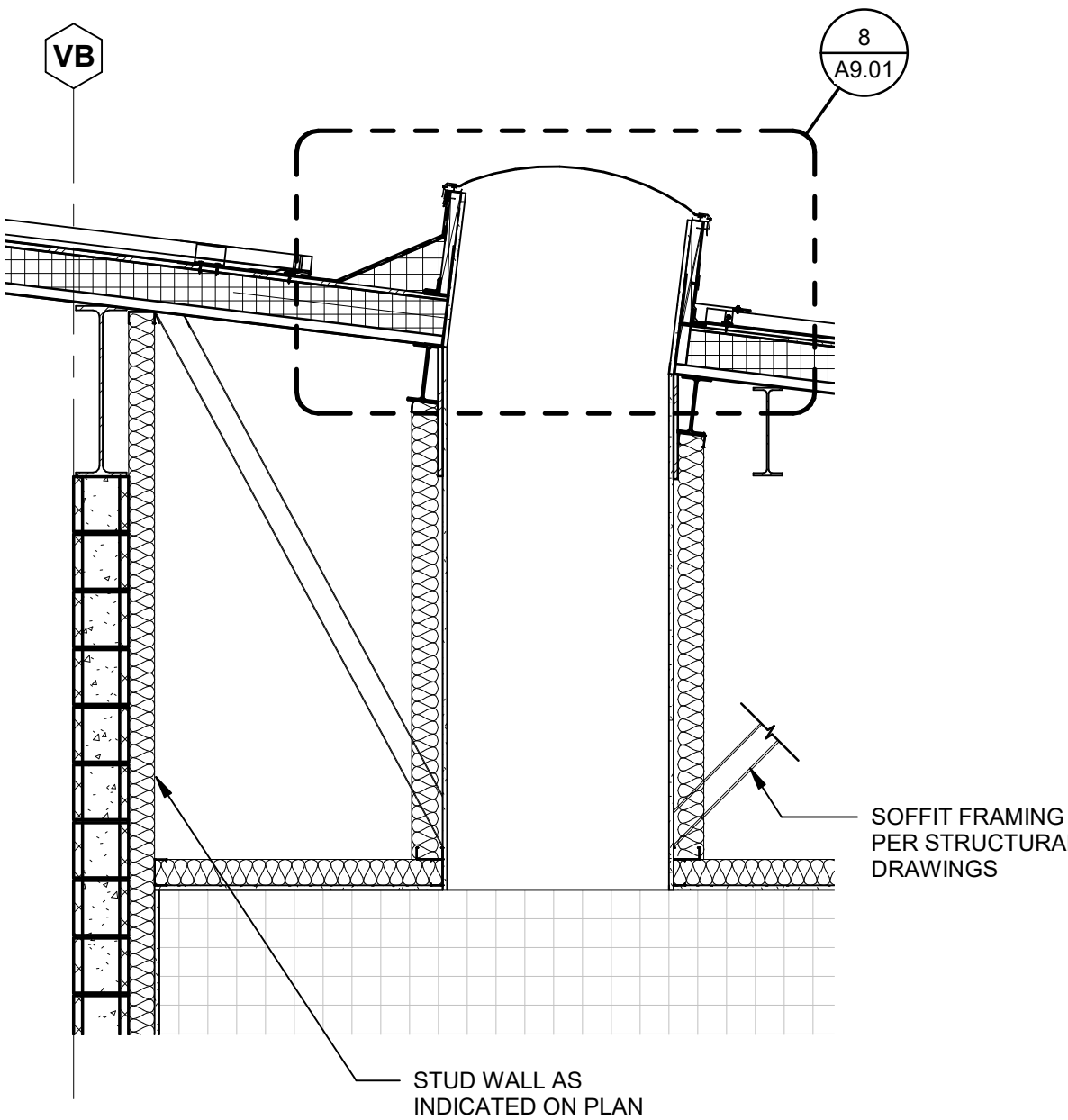
NOTE:
DOME-SHAPED SKYLIGHTS SHALL RISE ABOVE THE MOUNTING FLANGE A MINIMUM DISTANCE EQUAL TO 10 PERCENT OF THE MAXIMUM WIDTH OF THE DOME BY NOT LESS THAN 3 INCHES (76MM).

MAX. WIDTH OF SKYLIGHT = 45"
45" x .10 = 4.5

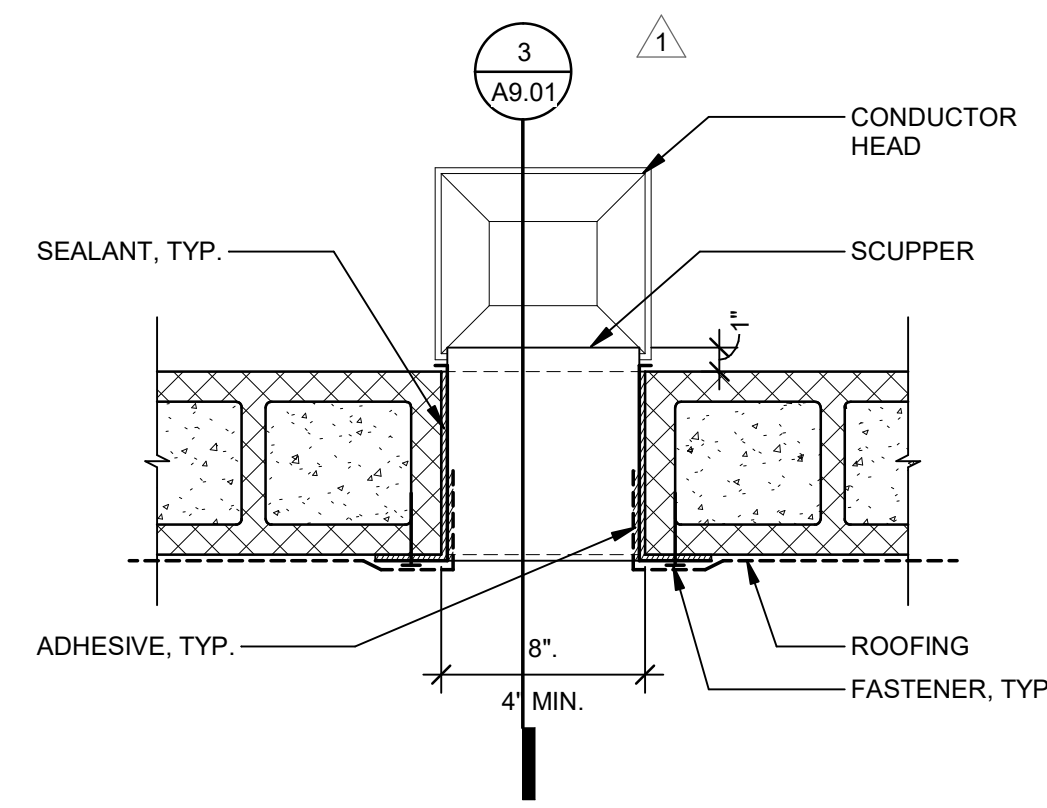
DOME TO BE MIN. 4.5" ABOVE MOUNTING FLANGE



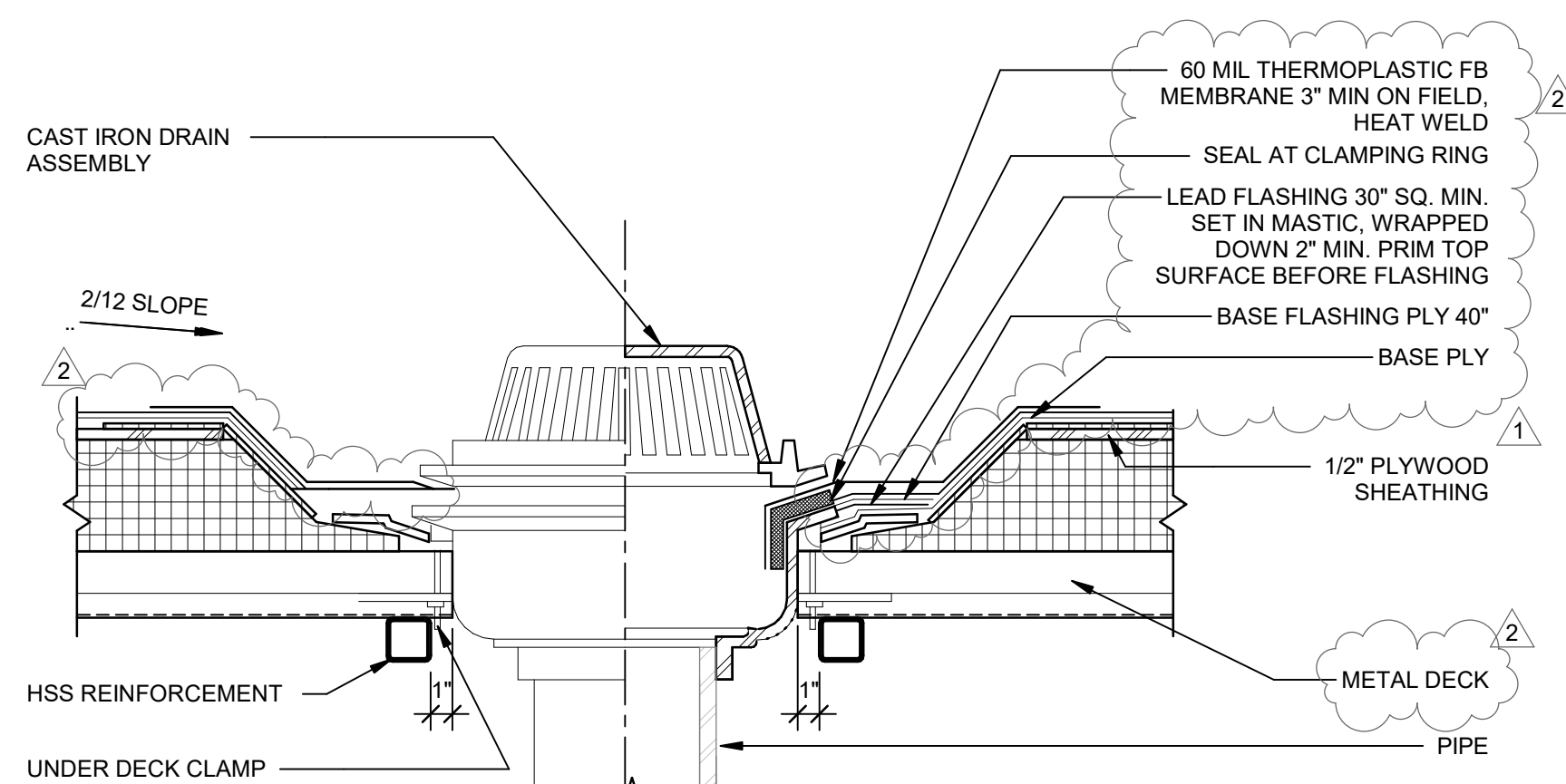
8 SKYLIGHT CURB DETAIL
Scale: 1 1/2" = 1'-0"



7 TYPICAL FIELD HOUSE SOFFIT DETAIL AT SKYLIGHT
Scale: 1/2" = 1'-0"

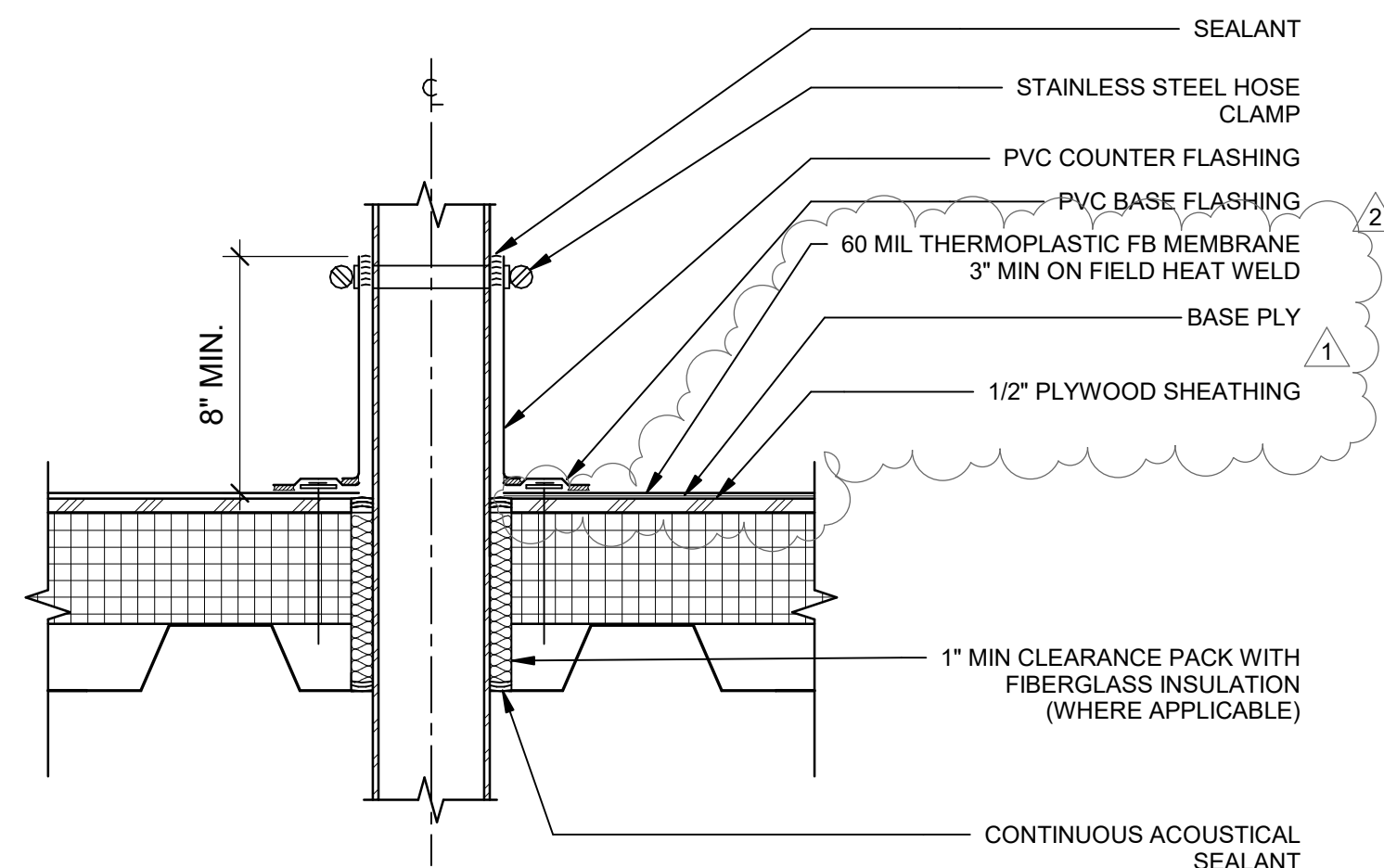


10 OVERFLOW SCUPPER PLAN DETAIL
Scale: 1 1/2" = 1'-0"

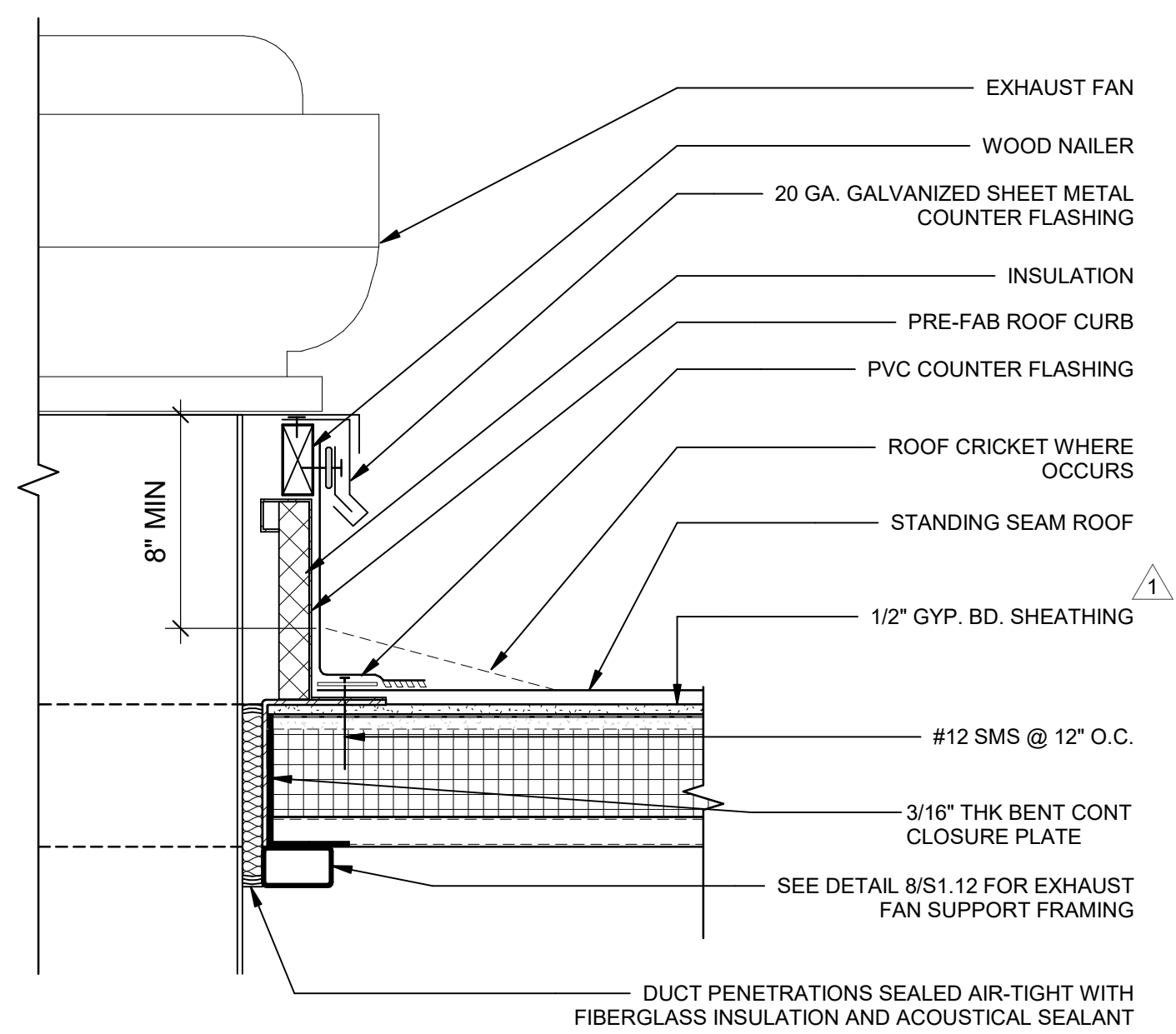


NOTES:
1 STEEL CLAMPING RINGS SHALL BE USED ON ALL ROOF DRAINS.
2 OVERFLOW DRAIN SAME AS ROOF DRAIN AND SHARES SAME SUMP RECEIVER. OD TO BE PROVIDED WITH 2" RING FROM MFG.
3 REFERENCE STRUCTURAL DETAIL 6/S1.11 FOR METAL DECK WITHOUT CONCRETE TOPPING

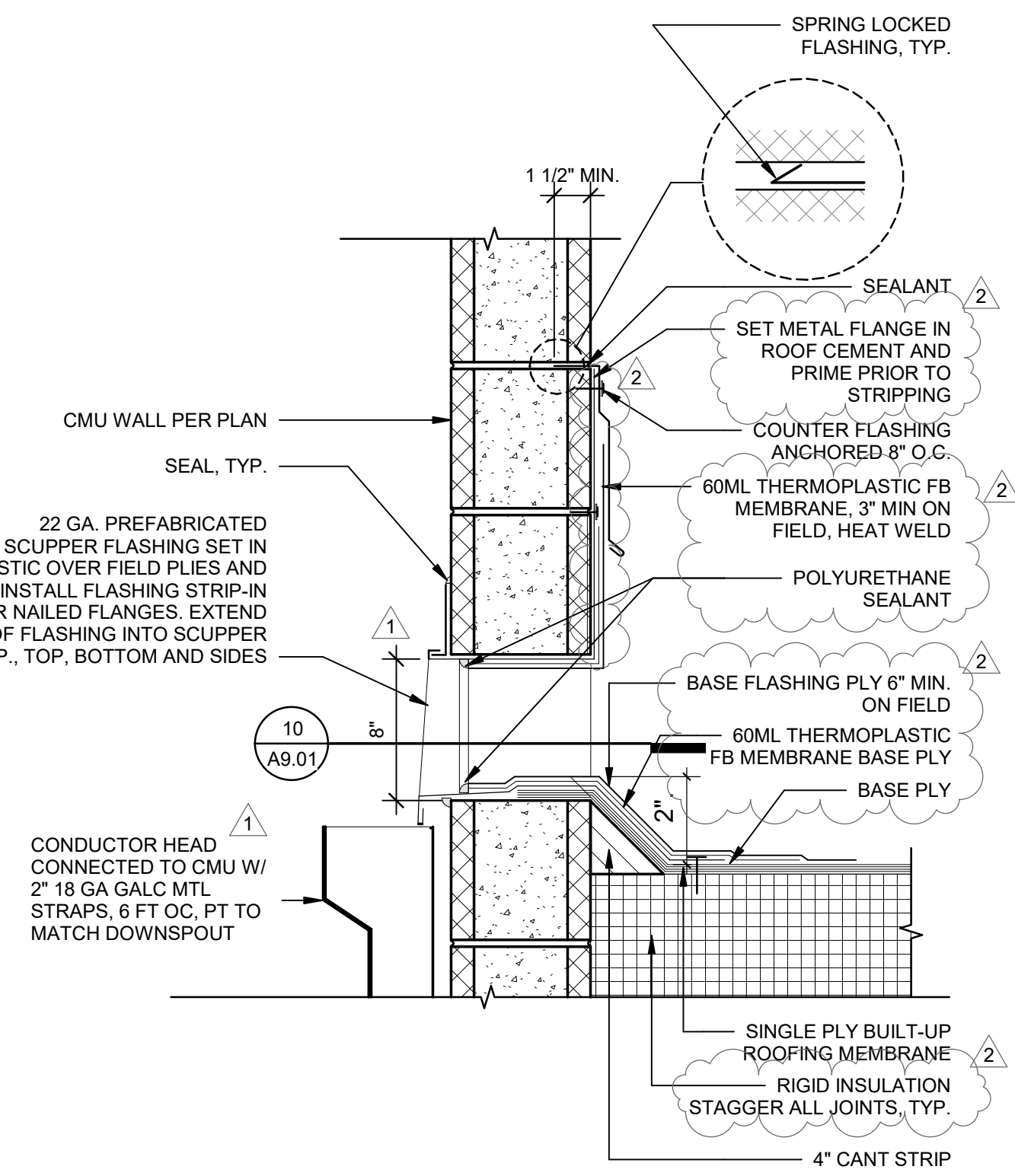
6 ROOF DRAIN
Scale: 1 1/2" = 1'-0"



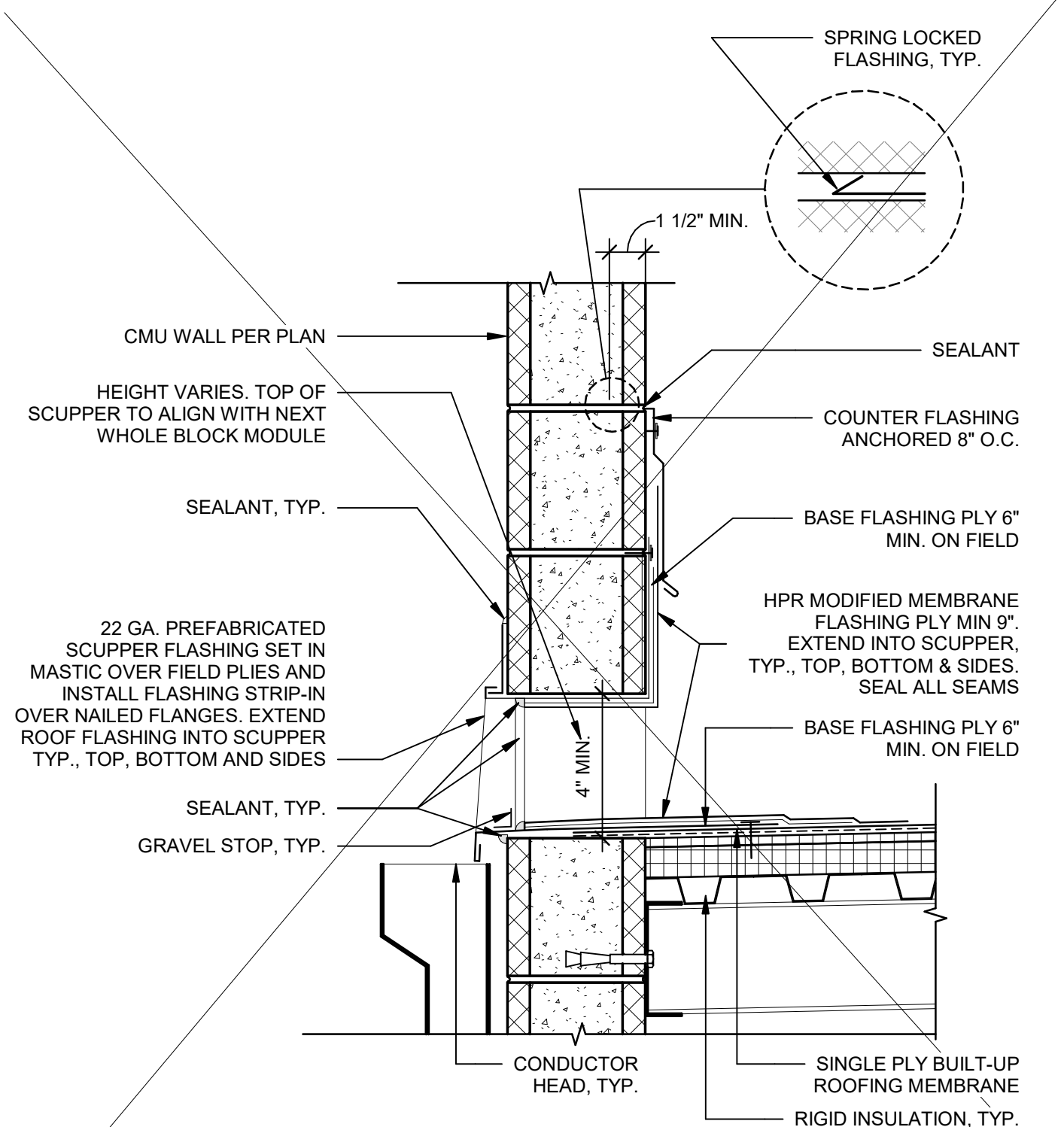
5 PIPE PENETRATION DETAIL @ SINGLE PLY ROOF
Scale: 1 1/2" = 1'-0"



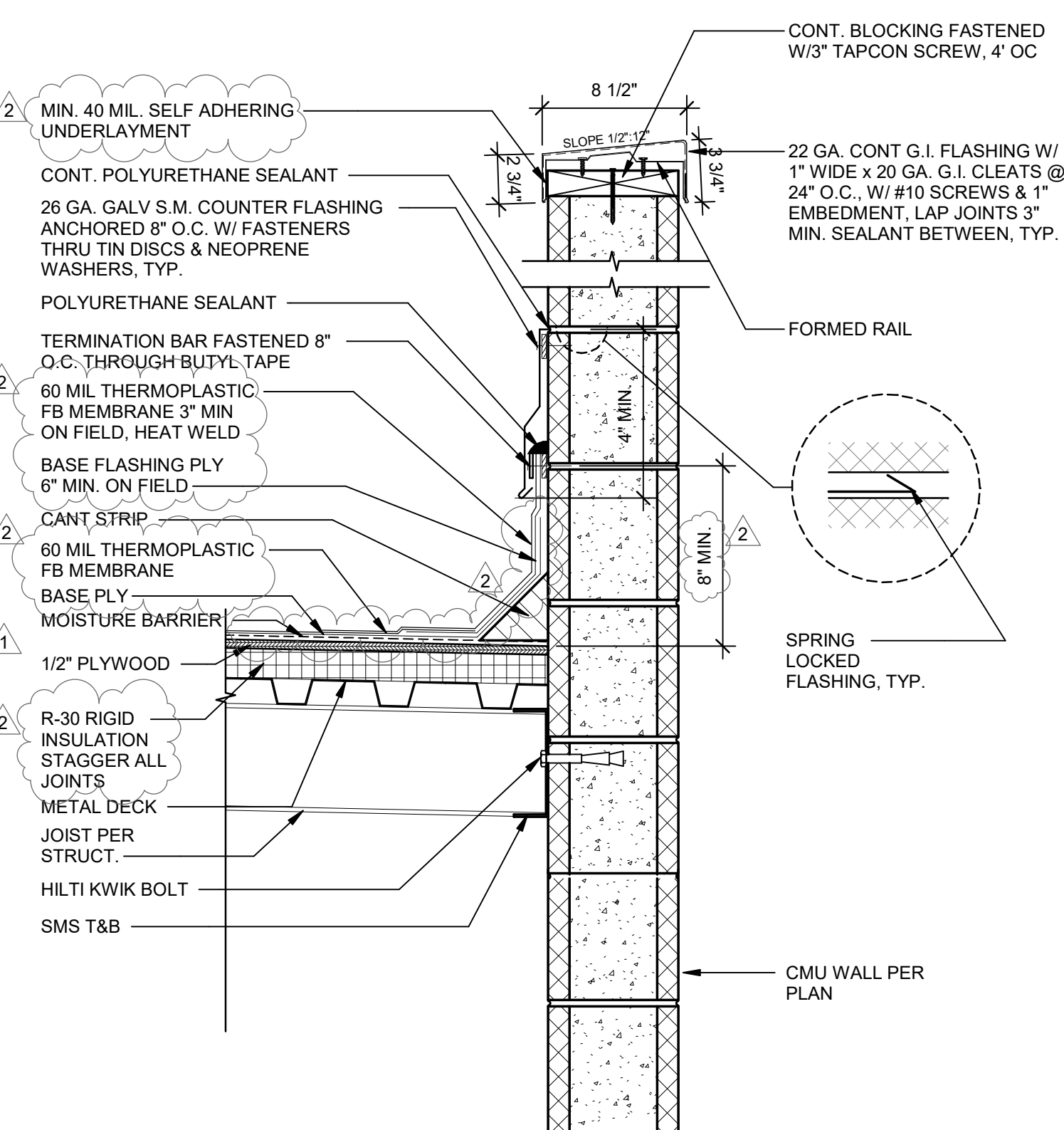
4 EXHAUST FAN CURB @ STANDING SEAM ROOF
Scale: 1 1/2" = 1'-0"



3 OVERFLOW SCUPPER DETAIL
Scale: 1 1/2" = 1'-0"



2 PRIMARY SCUPPER DETAIL
Scale: 1 1/2" = 1'-0"



1 CMU PARAPET
Scale: 1 1/2" = 1'-0"

REVISIONS

1 ADDENDUM 1	02/01/2022
2 ADDENDUM 2	03/01/2022

THIS APPROVAL IS FOR ITEMS WITHIN CLOUDED AREAS ONLY. FOR OTHER INFORMATION NOT CONTAINED WITHIN CLOUDED AREAS, REFER TO ORIGINAL DSA APPROVED PLANS.
DO NOT USE THESE PLANS AS SUBSTITUTE FOR THE ORIGINAL DSA APPROVED PLANS.



NORWALK LA MIRADA UNIFIED SCHOOL DISTRICT
LA MIRADA HIGH SCHOOL NEW FOOTBALL STADIUM PROJECT
13520 ADELEA DRIVE, LA MIRADA, CA 90638

DSA # 03-120551

NAC
ARCHITECTURE

NAC NO. 161-19015
DATE 02/01/2022

ADDENDUM 1

ROOF DETAILS

A9.01